

Political Action Committee IATSE-PAC

The IATSE-PAC was created in order for our union and its members to have a greater voice in the political and legislative process. PAC funds allows IATSE members to pursue a legislative agenda that supports our issues.



PAC FAQs



Who Can Contribute?

Members and employees of the IATSE local unions (and their families), who reside in the United States, may contribute to the IATSE-PAC.

Why Contribute?

Over the last couple of years, attacks on labor unions have accelerated into an all-out assault on workers across the country. In many states, American workers have been blamed for the financial crises and have been the chief target of many state budget cuts despite corporations recording record profits. In Washington, Congress is making major decisions that affect IATSE families nationwide, concerning issues such as digital theft, funding of Medicare, and collective bargaining. Giving to the PAC allows us to fight for legislation that benefits IATSE members and against legislation that hurts working men and women.

I Pay Union Dues--Why Should I Contribute to the PAC?

A common misconception is that Union dues go towards political activities. Federal Law prohibits the use of union dues for political purposes, so to participate in the political process and have a greater voice on issues impacting you as a member of the IATSE, you must voluntarily give to the IATSE-PAC.

How Do I Contribute?

There are several ways a member can contribute to the PAC. You can go online to the IATSE website and access the portal, or you can fill out the designated PAC forms which can be provided through your Local Business Agents.

How is the PAC Money Spent?

The IATSE-PAC is non-partisan and has supported Democrats, Republicans and Independents who are committed to protecting the institution of collective bargaining, fight to protect the benefits we've earned at the bargaining table, and work to secure social safety nets such as Medicare and Social Security.

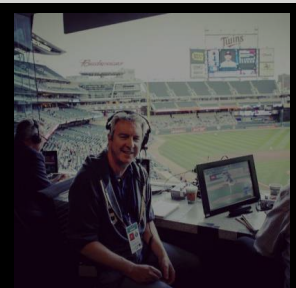
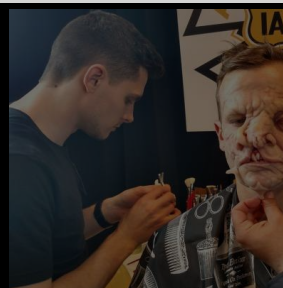
Where do I send my completed form?

If you have filled out a Payroll Authorization PAC form, give it to your employer's payroll company or employer payroll department.

If you have filled out a Credit/Debit Deduction Card, please keep a copy and send the green copy to your Local Business Agent or Local President or send to:



IATSE-PAC
c/o PAC Services
150 Post Office Road
#2398
Waldorf, MD 20604



"OUR UNIFIED VISION HAS EMBRACED GROWTH AND THE STRENGTH IT BRINGS. IT HAS BROUGHT US CREDIBILITY AND RESPECT AND -- MOST IMPORTANTLY -- POSITIVELY BENEFITED OUR MEMBERS."

Matthew Loeb
I.A.T.S.E President



Yes, I'll Join The *Stand Up, Fight Back* Campaign!



I'm donating to the IATSE Political Action Committee

I'm supporting the International Alliance of Theatrical Stage Employees Political Action Committee ("IATSE-PAC") in one or more of the following ways:

- A. HERE'S A CONTRIBUTION IN CASH OR CHECK IN THE AMOUNT OF \$ _____ (check required to donate more than \$100; please do not send cash in the mail). I will complete the information form below.
- B. I WANT TO DONATE VIA CREDIT CARD: I hereby authorize IATSE-PAC to initiate a deduction from my credit card in the amount(s) below. This authorization is to remain in full force until the IATSE-PAC has received written notification from me of its termination in such time and in such manner as to afford a reasonable opportunity to act on it.

Check one: President's Club (\$40.00/month) Leader's Club (\$20.00/month) Activist's Club (\$10.00/month)

- Or authorize a monthly contribution of \$ _____
 Or authorize a one-time contribution of \$ _____ (\$10.00 minimum)

Choose one: VISA American Express Mastercard Discover

INFORMATION NEEDED ON ALL CONTRIBUTORS:

Card #: _____ Expiration Date (MM/YY): ____ / ____ Card Security Code: _____

Employee Signature _____ Date _____ Last 4 Digits of SSN _____ Local Number _____

Print Name _____ Email _____ Phone Number _____

Home Address _____ City _____ State _____ Zip Code _____

Billing Address _____ City _____ State _____ Zip Code _____

Occupation/Employer _____

This Authorization is voluntarily made based on my specific understanding that:

- The signing of this authorization card and the making of contributions to the IATSE-PAC are not conditions of membership in the union nor of employment with any employer and that I may refuse to do so without fear of reprisal.
- I am making a contribution to fund-raising efforts sponsored by the IATSE-PAC and that the IATSE-PAC will use my contributions for political purposes, including but not limited to, the making of contributions to or expenditures on behalf of candidates for federal office, and addressing political issues of public importance.
- Federal law requires the IATSE-PAC to use its best efforts to collect and report the name, mailing address, occupation and the name of employer of individuals whose contributions exceed \$200 in a calendar year.
- Contributions or gifts to the IATSE-PAC are not deductible as charitable contributions for federal income tax purposes.
- Any contribution guideline is merely a suggestion and I may contribute more, less or nothing at all without favor or disadvantage from IATSE.
- The IATSE-PAC is unable to accept monies from corporations or Canadian members of the IATSE.



Please send to:
 IATSE-PAC
 C/O PAC Services
 150 Post Office Road, #2398
 Waldorf, MD 20604